



# ግብርና ግብርና ግብርና ግብርና ግብርና Expanding the Housing Continuum

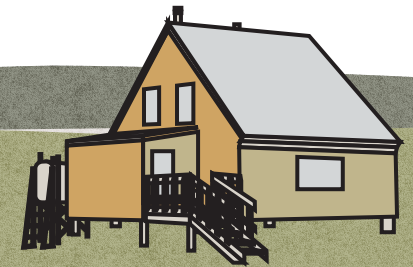
**2022-፲ ርዕሰ ገጽ**  
**2022 at a Glance**

**\$3 ገርግግ ግብር ስለግብርና ግብርና ግብርና ግብርና**

\$1.5 ገርግግ ግብር ግብርና ግብርና ግብርና ግብርና  
\$1.5 ገርግግ ግብር ግብርና ግብርና ግብርና ግብርና

**\$3 million in new funding for shelters**

\$1.5 million for homelessness  
\$1.5 million for family safety



**ግብርና ግብርና ግብርና ግብርና ግብርና**

ግብርና ግብርና ግብርና ግብርና ግብርና ግብርና ግብርና ግብርና ግብርና ግብርና

**Outreach to 82 clients**

Outreach was provided to 82 clients experiencing homelessness

**31 ግብርና ግብርና ግብርና ግብርና ግብርና**

ግብርና ግብርና ግብርና ግብርና ግብርና ግብርና ግብርና ግብርና ግብርና ግብርና

**31 clients supported to travel to a shelter**

Clients experiencing homelessness were supported to travel to a shelter or to find housing with family in another community



### 51 ᐃᓂᐃᑦ ᐃᖃᑲᓐᐃᑦᑲᑦᑲᑦ ᐃᑦᐃᑦᑲᑦᑲᑦᑲᑦᑲᑦ

ᐃᖃᑲᓐᐃᑦᑲᑦᑲᑦ ᐃᑦᐃᑦᑲᑦᑲᑦᑲᑦᑲᑦ ᓂᑦᐃᑦ ᐃᖃᑲᓐᐃᑦᑲᑦᑲᑦ ᐃᑦᐃᑦᑲᑦᑲᑦᑲᑦᑲᑦ ᐃᑦᐃᑦᑲᑦᑲᑦᑲᑦᑲᑦ

### 51 Inuit employees received staff housing

51 Inuit moved into staff housing from the staff housing waiting list

### ᓂᓐᓂᑦ 3000 ᖃᓂᐃᑦᐃᑦᑲᑦᑲᑦ

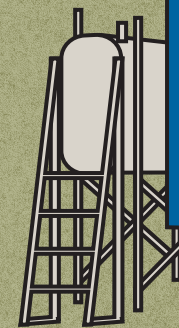
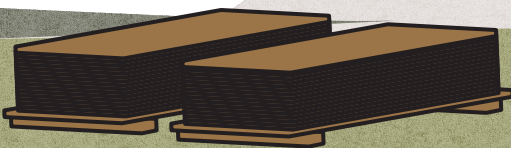
ᐃᑦᐃᑦᑲᑦᑲᑦᑲᑦᑲᑦᑲᑦ 3000-ᓂᑦ ᓂᑦᐃᑦ ᐃᑦᐃᑦᑲᑦᑲᑦᑲᑦᑲᑦ 2030-ᑲᑦ ᑲᑦᐃᑦᐃᑦ

### Nunavut 3000 Strategy

Developed Igluliuqatigiingniq for 3,000 new homes by 2030

### ᐃᖃᑲᓐᐃᑦᑲᑦᑲᑦ ᐃᑦᐃᑦᑲᑦᑲᑦᑲᑦᑲᑦ ᐃᑦᐃᑦᑲᑦᑲᑦᑲᑦᑲᑦ

### Transitional housing opened in Cambridge Bay



### ᐱᑦᑲᑦᑲᑦᑲᑦᑲᑦᑲᑦ ᓂᓐᓂᑦ ᐃᑦᐃᑦᑲᑦᑲᑦᑲᑦᑲᑦ ᐱᑦᑲᑦᑲᑦᑲᑦᑲᑦᑲᑦ

ᐃᑲᑦᑲᑦᑲᑦᑲᑦᑲᑦᑲᑦ ᐃᑦᑲᑦᑲᑦᑲᑦᑲᑦᑲᑦᑲᑦ ᓂᓐᓂᑦ ᐃᑦᐃᑦᑲᑦᑲᑦᑲᑦᑲᑦ ᐱᑦᑲᑦᑲᑦᑲᑦᑲᑦᑲᑦᑲᑦᑲᑦ, ᐃᓂᓐᓂᑦᑲᑦᑲᑦᑲᑦᑲᑦ ᐃᑦᐃᑦᑲᑦᑲᑦᑲᑦᑲᑦᑲᑦ ᑲᑦᑲᑦᑲᑦ, ᑲᓐᐃᑦᑲᑦᑲᑦᑲᑦ 2,000-ᑲᑦ ᑲᑦᐃᑦᐃᑦ 3,000-ᓂᑦ ᐃᑦᐃᑦᑲᑦᑲᑦᑲᑦᑲᑦ

### Partnership with NCC Development

Signed an agreement with NCC Development Limited, an Inuit-owned construction company, to build up to 2,000 of the 3,000 homes

























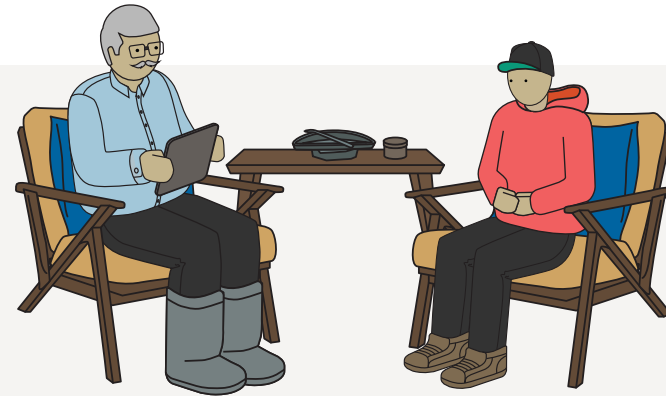
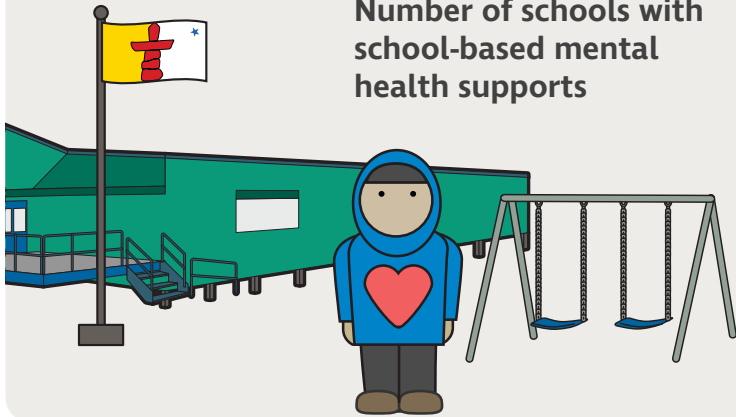




22

ᖃᖃᖃᖃᖃᖃ ᐃᖃᖃᖃᖃᖃ  
ᐃᖃᖃᖃᖃᖃᖃᖃᖃᖃ  
ᐃᖃᖃᖃᖃᖃᖃᖃᖃ  
ᐃᖃᖃᖃᖃᖃᖃᖃᖃᖃ

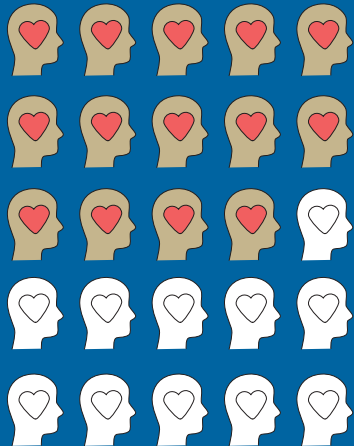
Number of schools with  
school-based mental  
health supports



29

ᖃᖃᖃᖃᖃᖃ ᐃᖃᖃᖃᖃᖃ  
ᐃᖃᖃᖃᖃᖃᖃ ᐃᖃᖃᖃᖃᖃᖃᖃᖃᖃ  
ᐃᖃᖃᖃᖃᖃᖃᖃᖃᖃ

Number of mental health  
paraprofessionals hired  
across the Territory



14

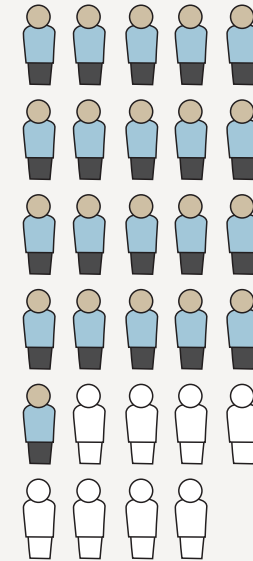
ᖃᖃᖃᖃᖃᖃ ᐃᖃᖃᖃᖃᖃᖃᖃᖃ

Number of  
communities with  
mental health  
paraprofessionals

21

ᖃᖃᖃᖃᖃᖃ ᐃᖃᖃᖃᖃᖃᖃ  
ᐃᖃᖃᖃᖃᖃᖃᖃᖃᖃ

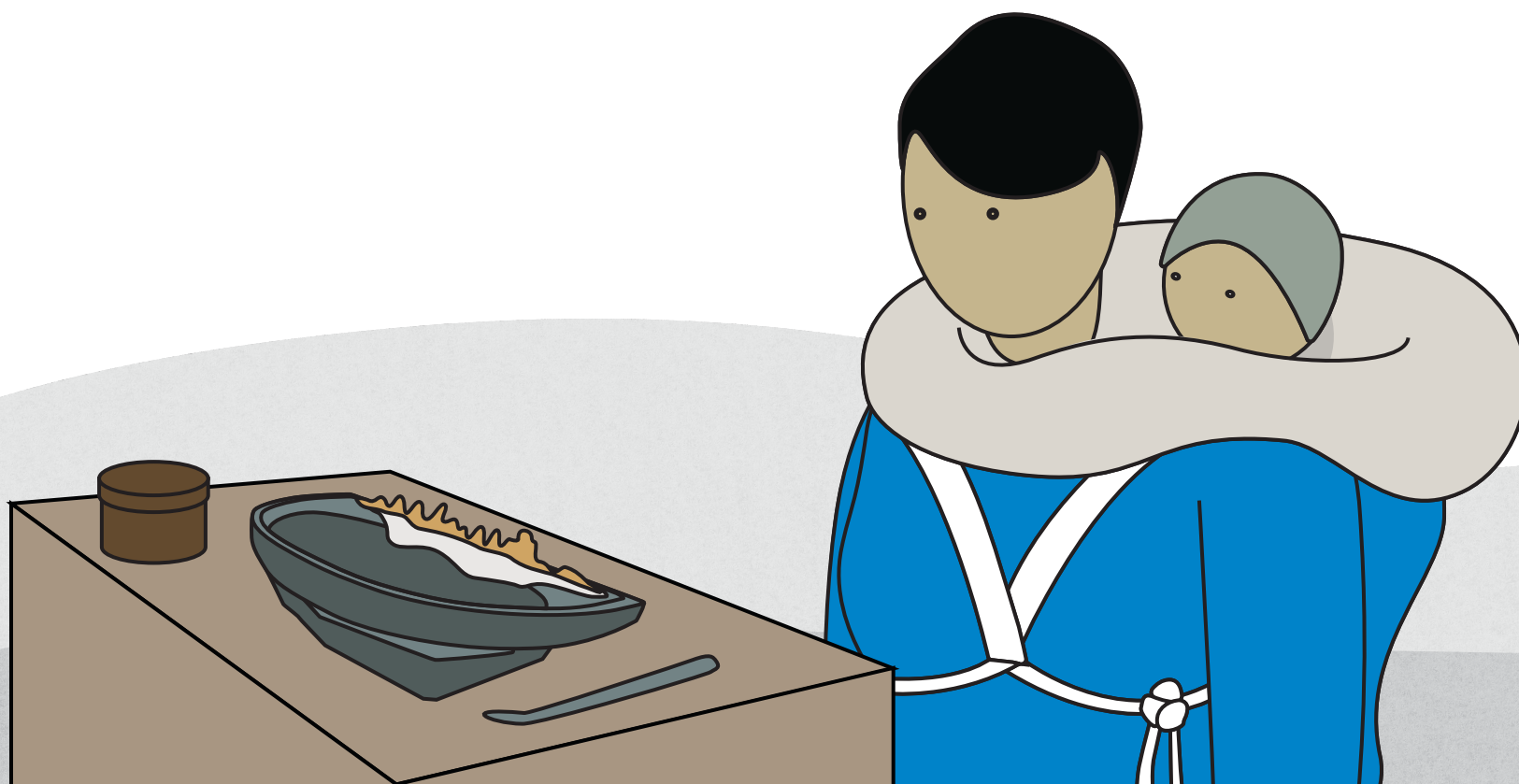
Number of  
mental health  
paraprofessionals  
who are Inuk























8-ᑦ, ᐃᓕᓂᓐᓂᑦᐱᓐᓂᑦ-ᓂᓂᓂᓂᑦ ᐃᓕᓕᓂᓂᓂᑦ ᐃᓂᓂᓂᓂᑦ ᐃᓂᓂᓂᓂᑦ  
 ᐱᓕᓕᓂᓂᓂᑦ ᓂᓂᓂᓂᓂᑦ 12-ᓂᑦ 12-ᓂᑦ ᓄᓇᓂᓂᓂᑦ  
 22-ᓂᑦ ᐃᓕᓂᓂᓂᑦ ᐱᓂᑦᓂᓂᓂᓂᓂᑦ. ᐃᓕᓂᓂᓂᑦ ᐃᓂᓂᓂᓂᑦ  
 ᐱᓂᑦᓂᓂᓂᑦ ᐃᓂᓂᓂᓂᑦ ᐃᓂᓂᓂᓂᑦ ᐃᓂᓂᓂᓂᑦ  
 ᐃᓂᓂᓂᓂᑦ, ᐃᓂᓂᓂᓂᑦ ᐃᓂᓂᓂᓂᑦ ᐃᓂᓂᓂᓂᑦ  
 ᐃᓂᓂᓂᓂᑦ ᐃᓂᓂᓂᓂᑦ.

ᐱᓕᓕᓂᓂᓂᑦ ᐃᓂᓂᓂᓂᑦ ᐃᓂᓂᓂᓂᑦ ᐃᓂᓂᓂᓂᑦ  
 ᐱᓂᓂᓂᓂᑦ ᐃᓂᓂᓂᓂᑦ ᐱᓂᓂᓂᓂᑦ ᐃᓂᓂᓂᓂᑦ  
 ᐃᓂᓂᓂᓂᑦ ᐃᓂᓂᓂᓂᑦ. ᐱᓕᓕᓂᓂᓂᑦ ᐃᓂᓂᓂᓂᑦ  
 ᓂᓂᓂᓂᓂᑦ 20-ᓂᑦ ᐃᓂᓂᓂᓂᑦ ᐃᓂᓂᓂᓂᑦ  
 ᐃᓂᓂᓂᓂᑦ ᐃᓂᓂᓂᓂᑦ.

ᐃᓂᓂᓂᓂᑦ ᐃᓂᓂᓂᓂᑦ ᐃᓂᓂᓂᓂᑦ ᐃᓂᓂᓂᓂᑦ  
 ᐃᓂᓂᓂᓂᑦ ᐃᓂᓂᓂᓂᑦ ᐃᓂᓂᓂᓂᑦ  
 ᐃᓂᓂᓂᓂᑦ ᐃᓂᓂᓂᓂᑦ ᐃᓂᓂᓂᓂᑦ.

ᐃᓂᓂᓂᓂᑦ ᐃᓂᓂᓂᓂᑦ ᐃᓂᓂᓂᓂᑦ ᐃᓂᓂᓂᓂᑦ  
 ᐃᓂᓂᓂᓂᑦ ᐃᓂᓂᓂᓂᑦ ᐃᓂᓂᓂᓂᑦ ᐃᓂᓂᓂᓂᑦ  
 ᐃᓂᓂᓂᓂᑦ ᐃᓂᓂᓂᓂᑦ ᐃᓂᓂᓂᓂᑦ ᐃᓂᓂᓂᓂᑦ  
 ᐃᓂᓂᓂᓂᑦ ᐃᓂᓂᓂᓂᑦ ᐃᓂᓂᓂᓂᑦ.

ᐃᓂᓂᓂᓂᑦ ᐃᓂᓂᓂᓂᑦ ᐃᓂᓂᓂᓂᑦ ᐃᓂᓂᓂᓂᑦ  
 ᐃᓂᓂᓂᓂᑦ ᐃᓂᓂᓂᓂᑦ ᐃᓂᓂᓂᓂᑦ ᐃᓂᓂᓂᓂᑦ  
 ᐃᓂᓂᓂᓂᑦ ᐃᓂᓂᓂᓂᑦ ᐃᓂᓂᓂᓂᑦ ᐃᓂᓂᓂᓂᑦ  
 ᐃᓂᓂᓂᓂᑦ ᐃᓂᓂᓂᓂᑦ.

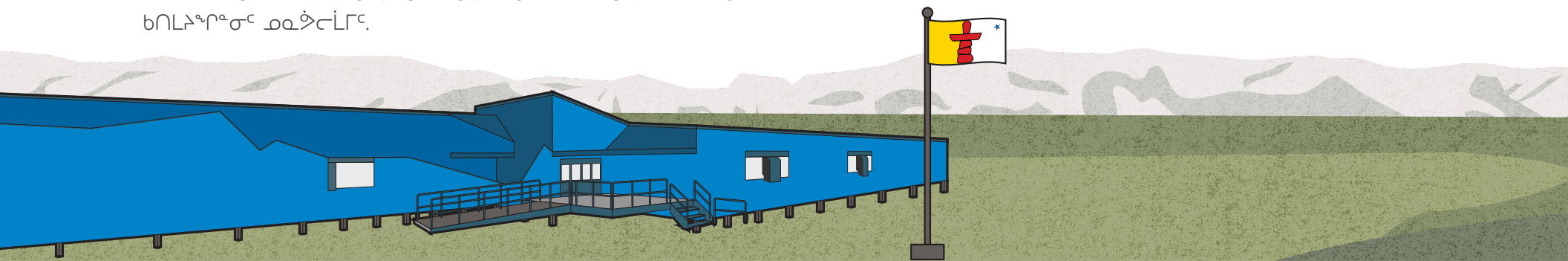
We expanded the school-based mental health supports initiative from 8 to 12 communities serving 22 schools. Education support services offered in schools include Occupational Therapy, Speech and Language Pathology, Deaf and Hard of Hearing Support Services, Physiotherapy and Education Psychology.

We are collaborating with Inuit organizations and other stakeholders to focus our efforts on language resource creation. Through working collaboratively, we hope to accelerate the 20-year Language of Instruction Implementation Plan.

We developed comprehensive educator resources to support teaching about residential schools and incorporate the Qinuisarniq book series materials into instruction.

We supported the diverse needs of our students through the development of new inclusive education handbooks to support teachers in working with students with down syndrome, attention deficit hyperactivity disorder and autism spectrum disorder.

We strengthened our partnerships through enhanced supports to the Coalition of Nunavut District Education Authorities to increase their capacity to support District Education Authorities across the Territory.











## ᓂᓇᔭᓂ 2023

### ᓄᓇᔭᓂ ᓆᓂᓇᓂᓐ ᐃᓚᐃᓂᐱᓂᓐᓂᓐ:

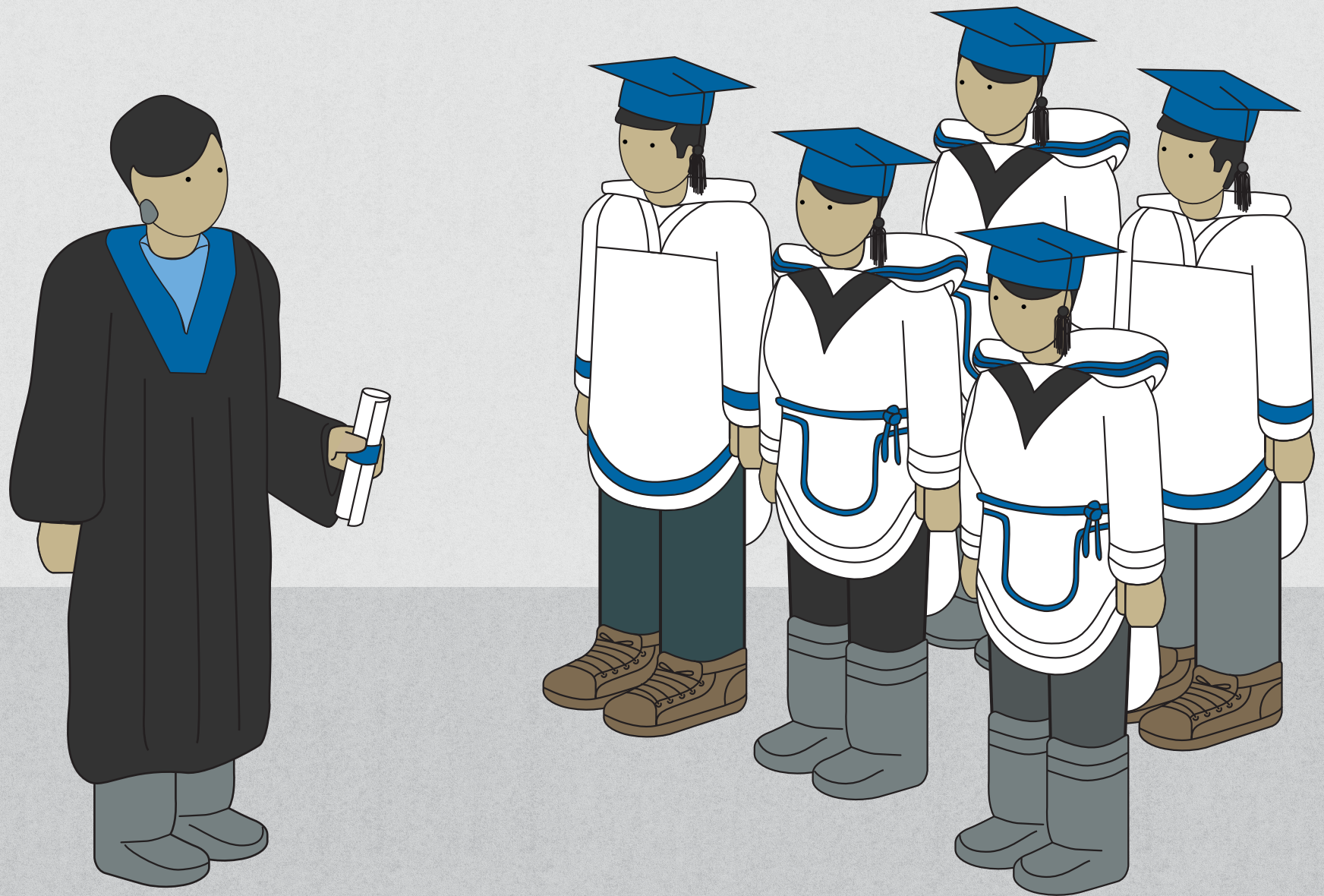
- ᓆᓂᓂᓂᓐᓂᓐ ᐃᓂᓂᓂᓐ ᐃᓂᓂᓂᓐᓂᓐ ᐃᓂᓂᓂᓐᓂᓐ
- ᓂᓂᓂᓂᓐᓂᓐ ᐱᓂᓂᓂᓐᓂᓐ, ᐃᓂᓂᓂᓐᓂᓐ ᓂᓂᓂᓂᓐᓂᓐ ᓂᓂᓂᓂᓐᓂᓐ ᓂᓂᓂᓂᓐᓂᓐ ᓂᓂᓂᓂᓐᓂᓐ ᓂᓂᓂᓂᓐᓂᓐ
- ᓂᓂᓂᓂᓐᓂᓐ ᐱᓂᓂᓂᓐᓂᓐ ᓂᓂᓂᓂᓐᓂᓐ ᐃᓂᓂᓂᓐᓂᓐ ᐃᓂᓂᓂᓐᓂᓐ ᐃᓂᓂᓂᓐᓂᓐ
- ᐱᓂᓂᓂᓐᓂᓐ ᐃᓂᓂᓂᓐᓂᓐ ᓂᓂᓂᓂᓐᓂᓐ ᓂᓂᓂᓂᓐᓂᓐ ᐃᓂᓂᓂᓐᓂᓐ
- ᐱᓂᓂᓂᓐᓂᓐ ᐃᓂᓂᓂᓐᓂᓐ ᐃᓂᓂᓂᓐᓂᓐ ᓂᓂᓂᓂᓐᓂᓐ ᐃᓂᓂᓂᓐᓂᓐ
- ᐃᓂᓂᓂᓐᓂᓐ ᐃᓂᓂᓂᓐᓂᓐ ᐃᓂᓂᓂᓐᓂᓐ ᐃᓂᓂᓂᓐᓂᓐ

## Plans for 2023

### The Government of Nunavut will:

- Roll out full-day kindergarten in five schools.
- Deliver Ajunngitugut, the K-1 and Grades 2-3 social emotional learning and resiliency program.
- Accelerate resource creation for the Language of Instruction Implementation Plan through collaboration with Inuit organizations and other stakeholders.
- Complete a comprehensive review of the Financial Assistance for Nunavut Students program.
- Improve the support to students leaving high school through multiple pathways.
- Finalize and begin implementation of the Inuktitut Language Training Strategy.





















ᓄᓇᓂᓴᑦ ᐱᓄᓪᓕᓐᓐᓐᓐᓐᓐᓐᓐ ᓐᓐᓐᓐᓐᓐᓐᓐ ᐱᓐᓐᓐᓐᓐᓐᓐᓐᓐᓐᓐ  
 ᓐᓐᓐᓐ ᓐᓐᓐᓐᓐᓐᓐᓐᓐᓐᓐᓐᓐᓐᓐᓐᓐᓐᓐᓐᓐᓐᓐᓐᓐᓐᓐᓐᓐ  
 ᓐᓐᓐᓐᓐᓐᓐᓐᓐᓐᓐᓐᓐᓐᓐᓐᓐᓐᓐᓐᓐᓐᓐᓐᓐᓐᓐᓐᓐᓐ  
 ᓐᓐᓐᓐᓐᓐᓐᓐᓐᓐᓐᓐᓐᓐᓐᓐᓐᓐᓐᓐᓐᓐᓐᓐᓐᓐᓐᓐᓐᓐ  
 ᓐᓐᓐᓐᓐᓐᓐᓐᓐᓐᓐᓐᓐᓐᓐᓐᓐᓐᓐᓐᓐᓐᓐᓐᓐᓐᓐᓐᓐ  
 ᓐᓐᓐᓐᓐᓐᓐᓐᓐᓐᓐᓐᓐᓐᓐᓐᓐᓐᓐᓐᓐᓐᓐᓐᓐᓐᓐᓐᓐ  
 ᓐᓐᓐᓐᓐᓐᓐᓐᓐᓐᓐᓐᓐᓐᓐᓐᓐᓐᓐᓐᓐᓐᓐᓐᓐᓐᓐᓐᓐ

ᓐᓐᓐᓐᓐᓐᓐᓐᓐᓐᓐᓐᓐᓐᓐᓐᓐᓐᓐᓐᓐᓐᓐᓐᓐᓐᓐᓐᓐᓐᓐ  
 ᐱᓐᓐᓐᓐᓐᓐᓐᓐᓐᓐᓐᓐᓐᓐᓐᓐᓐᓐᓐᓐᓐᓐᓐᓐᓐᓐᓐᓐᓐ  
 ᓐᓐᓐᓐᓐᓐᓐᓐᓐᓐᓐᓐᓐᓐᓐᓐᓐᓐᓐᓐᓐᓐᓐᓐᓐᓐᓐᓐᓐᓐ  
 ᓐᓐᓐᓐᓐᓐᓐᓐᓐᓐᓐᓐᓐᓐᓐᓐᓐᓐᓐᓐᓐᓐᓐᓐᓐᓐᓐᓐᓐ  
 ᓐᓐᓐᓐᓐᓐᓐᓐᓐᓐᓐᓐᓐᓐᓐᓐᓐᓐᓐᓐᓐᓐᓐᓐᓐᓐᓐᓐᓐ

Nunavut Development Corporation partnered with Royal Bank of Canada to advance the opening of an agency bank branch in the community of Pangnirtung at Uqqurmiut Arts and Crafts. Along with providing additional banking options for the residents of Pangnirtung, the partnership will generate additional revenue for the company that in turn can help support its local arts programming.

We continue to fund targeted marketing activities with the Nunavut Development Corporation at the Winnipeg Art Gallery, whose online shop ships worldwide.































ᓄᓇᓅᓪ ᓂᓴᓴᓂ  
Government of Nunavut  
Nunavut Kavamanga  
Gouvernement du Nunavut

[www.gov.nu.ca](http://www.gov.nu.ca)

